

<https://omsltd.net/>

Renewable Energy Consultancy Wind



January 2025

OMS Private Limited



Local Knowledge; Global Expertise

We're proud of reputation for technical excellence

OMS is a worldwide respected, multidisciplinary renewable energy consultancy with good reputation for engineering and technical excellence.

Operating from a network of offices across different countries, our global team of engineers and consultants has extensive national/international

experience and an impressive track-record.

We are dedicatedly working in partnership with our clients, helping to reduce risk, plan, design, and operate wind projects safely, profitably and with full confidence.

This dedication, coupled with commercial expertise and regulatory knowledge, ensures our services are tailored to project requirements, offering practical, informed and valuable advice no matter the stage of any wind project.

Wind Power

We have the solutions

Successful project delivery is at the heart of all we do and our expert engineers and consultants provide full wind project lifecycle engineering and consultancy services including:

Feasibility

Site Suitability: proposed site identification and selection

Outline feasibility studies including:

-Initial assessment of site energy resource

-Investigation of key technical, environmental and planning constraints

-Identification of candidate technology (turbine technology and initial layout design of BOP)

-Recommendations for progressing projects and requirements for more detailed feasibility work

Detailed feasibility studies

- Site visits

-Detailed assessment of site wind energy resource and bank grade energy yield prediction

-Detailed assessment of technical, environmental and planning constraints

-Consultation with potential stakeholders and planning authorities

-Project design and layout optimization

Design and development services

-Project sizing and design optimization

-Technology assessment and equipment specification

-Pre-contract documentation, specifications and negotiations

-Support during Energy Purchase Agreement (EPA) and Implementation Agreement (IA)

Construction Supervision

-Lender's technical advisor, owner's engineer and independent engineer services

-Project and site management

-Project design review

-Quality assurance inspections and factory acceptance tests

-Electrical and control systems expertise

-Built to specifications comparisons

-Witnessing of commissioning, plant testing and issuing of take-over certificates

-Contract review and enforcement of conditions including liquidated damages.

Operation and maintenance consultancy

-Specification preparation and tender assessment

-Post investment appraisal of projects

-Asset management, inspection and monitoring

-Warranty and contract management including: end of manufacturer warranty inspections and audits

-Failure prediction and strategy/condition monitoring and analysis

-Site health & safety management and consultancy

Due diligence

-Independent technical and financial due diligence:

-Lender's engineer/bank's engineer provisions ongoing through construction

-Contracting and procurement strategies

-Technical assessments of technologies and their manufacturers and suppliers

-Supply chain and supplier analysis

Experience

We've a proven track-record

We have a proven track-record of providing industry-leading technical advisory services, working with lead developers, lenders and investors.

We have served clients achieving their major project milestones by providing due diligence of proposed power plants, and bankable energy yield studies.

We have comprehensive knowledge of wind technology, investors and balance of plant, designing systems to overcome site constraints through consideration of topography, wind resource, planning requirements and suitable component integration.

Zorlu Enerji Pakistan Limited (ZEPL)



Client: Zorlu Enerji Pakistan
Location: Jhimpir, Sindh – Pakistan
Capacity: 56.4MW
Turbine Model: 5x1.2MW Vensys 62
Turbine Model: 28x1.8MW Vestas V90
Service: Independent Engineer
Duration: 2012-2013

Contracted by ZEPL to provide Independent Engineer Services for WPP, the service includes but not limited to:

- Inspection/witness of pre-commissioning tests of seller Interconnection facilities
- Inspection/witness of commissioning of seller interconnection facilities
- Inspection/witness of pre-commissioning tests of each WTG
- Inspection/witness of commissioning tests of each WTG
- Inspection/witness of commissioning (Reliability Run Test) of Complex as per EPA
- Inspection/witness of testing/calibration of anemometry system

Metro Power Company Limited (MPCL)



Client: Metro Power Company Limited
Location: Jhimpir, Sindh – Pakistan
Capacity: 50MW
Turbine Model: 20x2.5 MW Nordex N100 (50MW)
Service: Independent Engineer
Duration: 2015-2016

Contracted by MPCL to provide Independent Engineer Services for WPP, the service includes but not limited to:

- Inspection/witness of pre-commissioning tests of seller Interconnection facilities
- Inspection/witness of commissioning of seller interconnection facilities
- Inspection/witness of pre-commissioning tests of each WTG
- Inspection/witness of commissioning tests of each WTG
- Inspection/witness of commissioning (Reliability Run Test) of Complex as per EPA
- Inspection/witness of testing/calibration of anemometry system

Yunus Energy Limited (YEL)

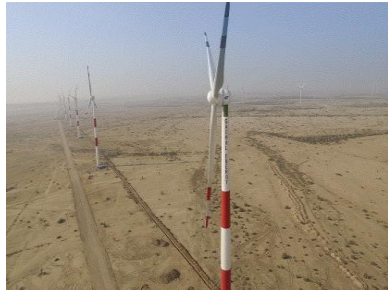


Client: Yunus Energy Limited
Location: Jhimpir, Sindh – Pakistan
Capacity: 50MW
Turbine Model: 20x2.5 MW Nordex N100 (50MW)
Service: Independent Engineer
Duration: 2015-2016

Contracted by YEL to provide Independent Engineer Services for WPP, the service includes but not limited to:

- Inspection/witness of pre-commissioning tests of seller Interconnection facilities
- Inspection/witness of commissioning of seller interconnection facilities
- Inspection/witness of pre-commissioning tests of each WTG
- Inspection/witness of commissioning tests of each WTG
- Inspection/witness of commissioning (Reliability Run Test) of Complex as per EPA
- Inspection/witness of testing/calibration of anemometry system

Sachal Energy
Development Limited
(SEDL)



Client: Sachal Energy
Development Limited
Location: Jhimpir, Sindh –
Pakistan
Capacity: 49.5 MW
Turbine Model: 33x1.5 MW
Goldwind GW82 (49.5MW)
Service: Independent Engineer
Duration: 2017

Contracted by SEDL to provide
Independent Engineer Services
for WPP, the service includes but
not limited to:

- Inspection/witness of pre-commissioning tests of seller interconnection facilities
- Inspection/witness of commissioning of seller interconnection facilities
- Inspection/witness of pre-commissioning tests of each WTG
- Inspection/witness of commissioning tests of each WTG
- Inspection/witness of commissioning (Reliability Run Test) of Complex as per EPA
- Inspection/witness of testing/calibration of anemometry system

Artistic Energy (Private)
Limited (AEPL)



Client: Artistic Energy Private
Limited
Location: Jhimpir, Sindh –
Pakistan
Capacity: 49.3 MW
Turbine Model: 29x1.7 MW
General Electric GE1.7-103
(49.3MW)
Service: Independent Engineer
Duration: 2017-2018

Contracted by AEPL to provide
Independent Engineer Services
for WPP, the service includes but
not limited to:

- Inspection/witness of pre-commissioning tests of seller interconnection facilities
- Inspection/witness of commissioning of seller interconnection facilities
- Inspection/witness of pre-commissioning tests of each WTG
- Inspection/witness of commissioning tests of each WTG
- Inspection/witness of commissioning (Reliability Run Test) of Complex as per EPA
- Review of the Environment study report of the complex and issuance of certificate as per EPA

Burj Gharo Energy Private
Limited (BGEL)



Client: Burj Capital
Location: Gharo, Sindh – Pakistan
Capacity: 50 MW
Service: Owner's Engineer
Duration: 2017 ~ 2018

Contracted by BGEL to provide
Owner's Engineer services for
development/construction
activity for WPP, the service
include but not limited to:

- Preparation of technical Feasibility
- Preparation of Grid Interconnection studies
- Support in EPC contract negotiation
- Support in Generation License
- Support in Tariff Preparation
- Support in Energy Purchase Agreement (EPA)
- Support in Implementation Agreement (IA)
- Support till Financial Close

Burj Wind Energy Private Limited (BWEPL)



Client: Burj Capital
Location: Gujju, Sindh – Pakistan
Capacity: 14 MW
Service: Owner's Engineer
Duration: 2017 ~ 2018

Contracted by BWEPL to provide Owner's Engineer services for development/construction activity for WPP, the service include but not limited to:

- Preparation of technical Feasibility
- Support in EPC contract negotiation
- Support in Generation License
- Support in Tariff Preparation
- Support in Energy Purchase Agreement (EPA)
- Support in Implementation Agreement (IA)
- Support till Financial Close

Mari Petroleum Company Limited (MPCL)



Client: Mari Petroleum Company Limited (MPCL)
Location: Jhampir, Sindh – Pakistan
Capacity: 51 MW
Service: Technical Consultancy Services
Duration: 2019

Contracted by MPCL to provide Technical Consultancy Services for Due Diligence of 51 MW Wind Power Project, the service includes but not limited to:

- ✓ The practicality of capacity factors i.e. given the technical parameters, resource availability and the equipment proposed, is the capacity factor achievable without major risk?
- ✓ Suitability of the technical solutions proposed in each project
- ✓ Suitability of interconnection proposed and the risks involved in availability of the interconnection facilities
- ✓ Suitability of the proposed sites for the project from the point of view of resource availability, interconnection and foundation requirements
- ✓ The extent of ability of the OEMs to undertake the resource risk.
- ✓ Due diligence of land valuation and transfer of title.
- ✓ Detail of practicality of all the assumptions, costs and facilities involved in each project.
- ✓ Tariff determination model
- ✓ Sensitivity analysis of the assumptions and their impacts on ROE.
- ✓ Feasibility Report should also include Timelines for achievement of financial close of the project.
- ✓ Comparative analysis of both the project based on ROE and consultants recommendation would also be part of the final report.

Master Green Energy Limited (MGEL)



Client: Master Green Energy Limited (MGEL)
Location: Jamshoro, Sindh – Pakistan
Capacity: 50 MW
Turbine Model: 25x2.0 MW Gamesa G114-2.0
Service: Independent Engineer
Duration: Sep 2020- Aug 2021

Contracted by MGEL to provide Independent Engineer Services for WPP, the service includes but not limited to:

- Inspection/witness of pre-commissioning tests of seller Interconnection facilities
- Inspection/witness of commissioning of seller interconnection facilities
- Inspection/witness of pre-commissioning tests of each WTG
- Inspection/witness of commissioning tests of each WTG
- Inspection/witness of commissioning (Reliability Run Test) of Complex as per EPA
- Review of the Environment study report of the complex and issuance of certificate as per EPA

Artistic Wind Power (Private) Limited (AWPPL)



Client: Artistic Wind Power (Private) Limited (AWPPL)
Location: Jhimpir, Sindh – Pakistan
Capacity: 50 MW
Turbine Model: 20x2.5 MW Goldwind GW121-2.5
Service: Independent Engineer
Duration: Aug 2021- Feb 2022

Contracted by AWPPL to provide Independent Engineer Services for WPP, the service includes but not limited to:

- Inspection/witness of pre-commissioning tests of seller Interconnection facilities
- Inspection/witness of commissioning of seller interconnection facilities
- Inspection/witness of pre-commissioning tests of each WTG
- Inspection/witness of commissioning tests of each WTG
- Inspection/witness of commissioning (Reliability Run Test) of Complex as per EPA
- Review of the Environment study report of the complex and issuance of certificate as per EPA

Metro Wind Power Limited (MWPL)



Client: Metro Wind Power Limited (MWPL)
Location: Jhimpir, Sindh – Pakistan
Capacity: 60 MW
Turbine Model: 30x2.0 MW Gamesa G114-2.0
Service: Independent Engineer
Duration: Aug 2021- June 2022

Contracted by MWPL to provide Independent Engineer Services for WPP, the service includes but not limited to:

- Inspection/witness of pre-commissioning tests of seller Interconnection facilities
- Inspection/witness of commissioning of seller interconnection facilities
- Inspection/witness of pre-commissioning tests of each WTG
- Inspection/witness of commissioning tests of each WTG
- Inspection/witness of commissioning (Reliability Run Test) of Complex as per EPA
- Review of the Environment study report of the complex and issuance of certificate as per EPA

Indus Wind Energy Limited (IWEL)



Client: Indus Wind Energy Limited (IWEL)
Location: Jhimpir, Sindh – Pakistan
Capacity: 50 MW
Turbine Model: 25x2.0 MW GE 2.0-116 General Electric
Service: Independent Engineer
Duration: Sep 2021- March 2022

Contracted by IWEL to provide Independent Engineer Services for WPP, the service includes but not limited to:

- Inspection/witness of pre-commissioning tests of seller Interconnection facilities
- Inspection/witness of commissioning of seller interconnection facilities
- Inspection/witness of pre-commissioning tests of each WTG
- Inspection/witness of commissioning tests of each WTG
- Inspection/witness of commissioning (Reliability Run Test) of Complex as per EPA
- Review of the Environment study report of the complex and issuance of certificate as per EPA

Lakeside Energy (Private) Limited (LEPL)



Client: Lakeside Energy (Private) Limited (LEPL)
Location: Jhimpir, Sindh – Pakistan
Capacity: 50 MW
Turbine Model: 25x2.0 MW Gamesa G114-2.0
Service: Independent Engineer
Duration: Sep 2021- April 2022

Contracted by LEPL to provide Independent Engineer Services for WPP, the service includes but not limited to:

- Inspection/witness of pre-commissioning tests of seller Interconnection facilities
- Inspection/witness of commissioning of seller interconnection facilities
- Inspection/witness of pre-commissioning tests of each WTG
- Inspection/witness of commissioning tests of each WTG
- Inspection/witness of commissioning (Reliability Run Test) of Complex as per EPA
- Review of the Environment study report of the complex and issuance of certificate as per EPA

Kot Addu Power Company Limited (KAPCO)

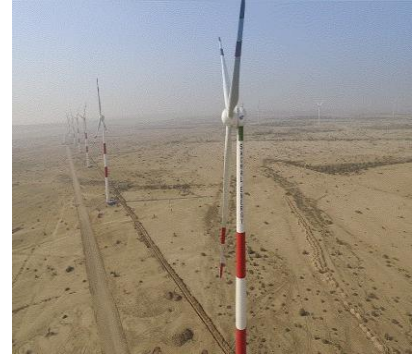


Client: Kot Addu Power Company Limited
Location: Gharo, Sindh - Pakistan
Capacity: 49.5 MW
Service: Technical Consultancy Services
Duration: 2023

Contracted by KAPCO to provide Technical Consultancy Services for Due Diligence of 49.5 MW Operational Wind Power Plant of Tenaga Generasi Limited, the service includes but not limited to:

- ✓ Operational Assessment
- ✓ Technical Infrastructure Review
- ✓ Contractual and Regulatory Compliance
- ✓ Environmental and Social Impact Assessment Review
- ✓ Health and Safety Inspection
- ✓ Financial and Economic Analysis
- ✓ Future Performance Forecast

Kot Addu Power Company Limited (KAPCO)



Client: Kot Addu Power Company Limited
Location: Jhimpir, Sindh - Pakistan
Capacity: 49.5 MW
Service: Technical Consultancy Services
Duration: 2024

Contracted by KAPCO to provide Technical Consultancy Services for Due Diligence of 49.5 MW Operational Wind Power Plant of Sachal Energy Development (Private) Limited, the service includes but not limited to:

- ✓ Operational Assessment
- ✓ Technical Infrastructure Review
- ✓ Contractual and Regulatory Compliance
- ✓ Environmental and Social Impact Assessment Review
- ✓ Health and Safety Inspection
- ✓ Financial and Economic Analysis
- ✓ Future Performance Forecast

K-Electric Limited



Client: K-Electric Limited
Location: Karachi, Pakistan
Capacity: 240MW (Wind/Solar Hybrid)
Service: Independent Engineer
Duration: 2024

In compliance with NEPRA Competitive Bidding Tariff Regulations, 2017 (NCBTR), KE appointed OMS as Independent Consultant (IC). The scope of service of OMS includes but not limited to:

- To conduct thorough technical and financial evaluation as per the regulations, respective RFPs and any directives from NEPRA.
- Technical Evaluation of Bids: Responsible for complete Bid evaluation process i.e., technical and commercial evaluation, ensuring that the proposals submitted by the bidders are complying to the conditions of RFP and are in line with the Regulations
- Commercial Evaluation of Bids: Provide commercial evaluation report outlining the sequence of Bidders based on their commercial bids (from lowest to highest).
- Bid Evaluation Report: The technical and commercial evaluation reports along with the details as per the regulations of NCBT, NEPRA.

<https://omsltd.net/>

Contact Us

We'd like to hear from you

To benefit from our impartial and Independent services or to find out more about our experience and what we have to offer visit www.omsltd.net or contact us through any of the telephone numbers listed below:

Accreditations

We are committed to quality

We hold multiple certification in Safety, Environment and Quality system and are committed to deliver the highest standards of Quality, Environmental and Health & Safety Assurance. This commitment is demonstrated by our continued certification of ISO 45001:2018 (Health & Safety Management), ISO 9001 (Quality Management) and ISO 14001 (Environmental Management) standards. This award compliments our multiple accreditation and further emphasizes our commitment to enhancing standards through continuous quality improvement practices and underlines our dedication to the provision of technical excellence.

Pakistan:

251-CCA, Block FF Phase-IV DHA, Lahore
Contact: +92 42 35748650, +92-42-35748655
Fax: +92 42 35748665
Email: khalid.javed@omsltd.net; charlie.lane@omsltd.net

India:

Plot No-N2-170, IRC Village, Nayapalli, Bhubaneswar-751015 (Odissa), India
Contact: +91 674 255 2984-85 Fax: +91 674 255 2986
Email: debjcet.swain@omsltd.net

Mauritius:

5th Floor, Ebene Esplanade, 24 Cyber City, Ebene, (Mauritius)
Email: dale.sinkler@omsltd.net; khalid.javed@omsltd.net

Bangladesh:

House No # CEN(D)3, Flat : B1 , Road No#95 , Gulshan II Dhaka 1212, (Bangladesh)
Contact :+88 02 8881256-7, Cell: +88 0181 9239845,
Fax: +88 02 8881258
Email: tofael.ahmed@omsltd.net Joe.selmser@omsltd.net

